



**RAILWAY
MARKET**



**HUMAN
ADDED
VALUE**

MOBILITY & INDUSTRIES

MATERIALS
CONVERTING
SERVICE

 **ADDEV**MATERIALS

ABOUT US

ADDEV Materials is a designer and manufacturer of customized sustainable materials solutions for industrial performance

Our business expertise:

ADDEd Value on MATERIALS

▶ EXPERT DISTRIBUTION

▶ CONVERTING OF FILMS & ADHESIVE SOLUTIONS

▶ SPECIALTY MANUFACTURING

▶ CUSTOM PACKAGING OF CHEMICAL PRODUCTS

Our materials:

- Adhesive tapes
- Foams

- Technical films
- Papers & fibers

- Adhesives & Sealants
- Chemicals

- Coatings
- Paints

3 BUSINESS GROUPS

ADDEV Materials is composed of 3 business groups to address our main strategic markets.

2

ADDEV MATERIALS



**AEROSPACE
& DEFENSE**



**MOBILITY &
INDUSTRIES**



**HEALTHCARE
& HYGIENE**

MISSION

A perfect combination of expertise in advanced materials, converting excellence and market & application knowledge.



Your benefits:

- Cost optimization
- Increased productivity

- Waste reduction
- Better competitiveness

- Sustainable growth

MOBILITY & INDUSTRIES

ADDEV Materials is specialized in the converting and distribution of high-performance materials for Mobility markets (Automotive, Railway) as well as Power, Construction & Industries markets.



POWER



RAILWAY



AUTOMOTIVE



CONSTRUCTION



INDUSTRIES



FOCUS ON RAILWAY MARKET

ADDEV Materials offers solutions that meet the requirements of EN 45545 standards for all kinds of rolling stock and their entire environment: **external structure, engine part, cabin interior and outdoor infrastructures & signages.**



HIGH SPEED TRAINS



REGIONAL & INTERCITY



LOCOMOTIVES



TRAMWAYS & LIGHT RAIL VEHICLES



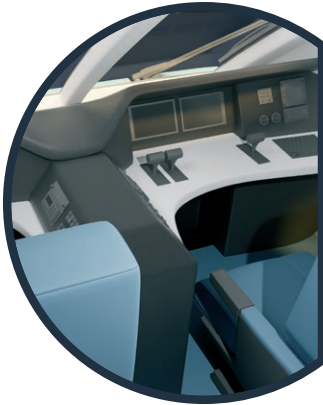
METROS



BUSES

OUR TECHNICAL EXPERTISE

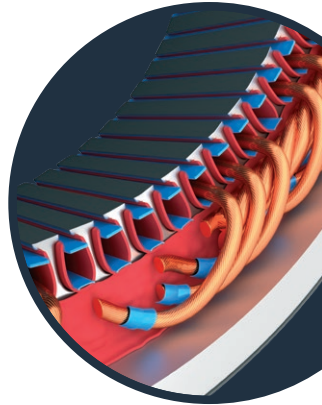
WE ARE EXPERTS IN HIGH PERFORMANCE MATERIALS DEDICATED TO THE RAILWAY MARKET. Our technical know-how in the rail market, combined with our wide range of dedicated materials and converting capabilities, allows us to provide technical solutions for a large range of applications:



THERMAL MANAGEMENT

- ▶ On board electronics
- ▶ Electric systems
- ▶ HVAC systems
- ▶ Walls

Solutions: Adhesives, Thermal pads, Foams, Glass wool



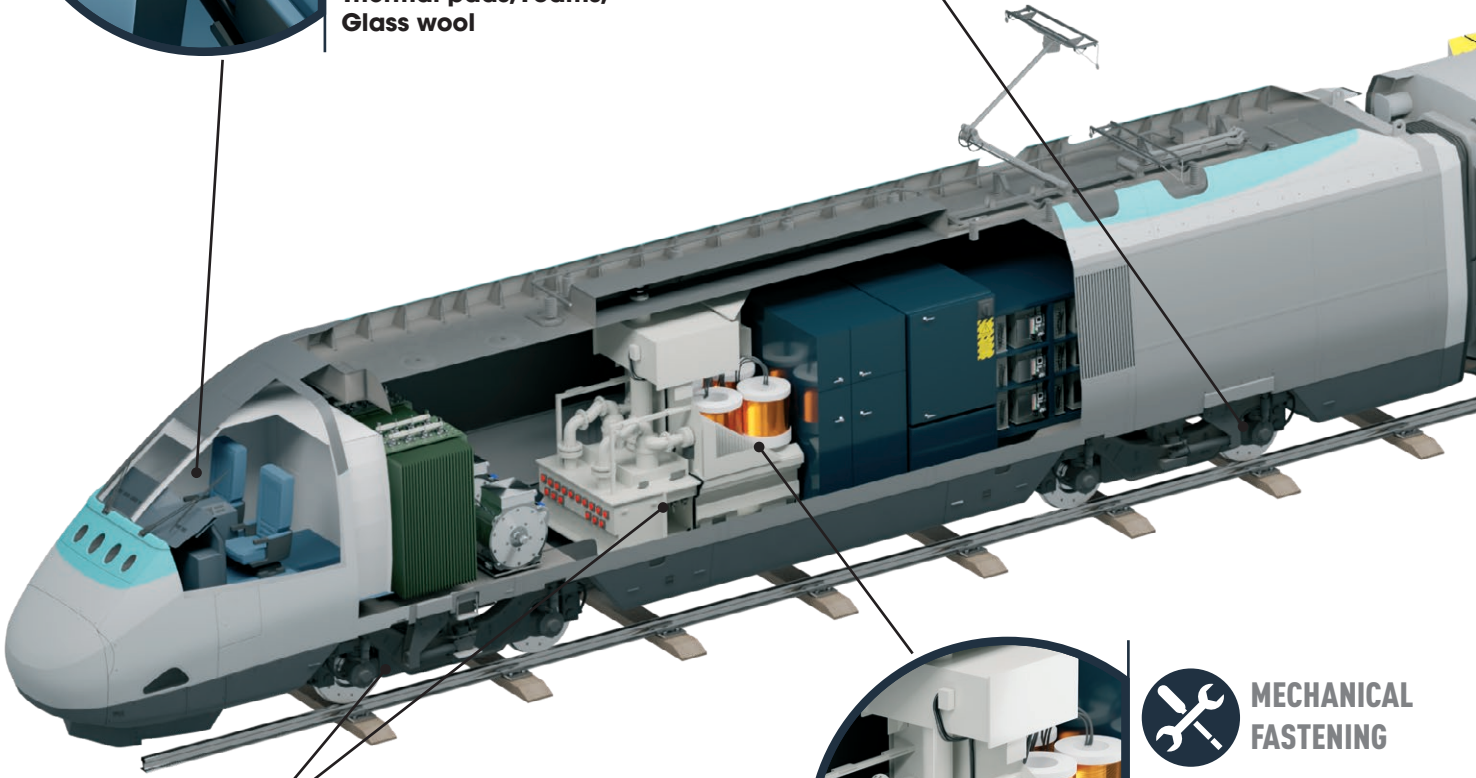
ELECTRICAL INSULATION

- ▶ On board electronics
- ▶ Transformers
- ▶ Converters
- ▶ Traction motors
- ▶ Electric systems

Solutions: Films, Adhesive Tapes, Foams, Composites, Sleeves, Resins

4

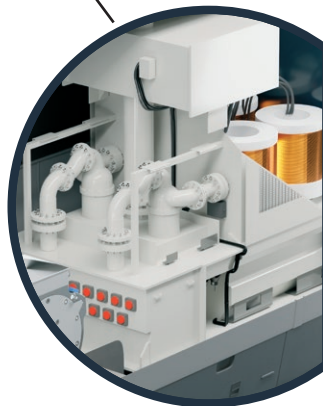
ADDEV MATERIALS



SURFACE TREATMENTS & PROTECTION

- ▶ Exterior surface treatments
- ▶ Finishing car body wrapping
- ▶ Bogies
- ▶ Cables wrapping
- ▶ Windows glasses
- ▶ Traction motors
- ▶ HVAC systems
- ▶ Armrests, tables, windows, grab bars, restrooms

Solutions: Films, Adhesive Tapes, Composites, Sleeves, Resins, Paints & Coatings



MECHANICAL FASTENING

- ▶ Transformers
- ▶ Converters

Solutions: Composites



SEALING

- ▶ HVAC systems
- ▶ Cabin interiors
- ▶ Headlights

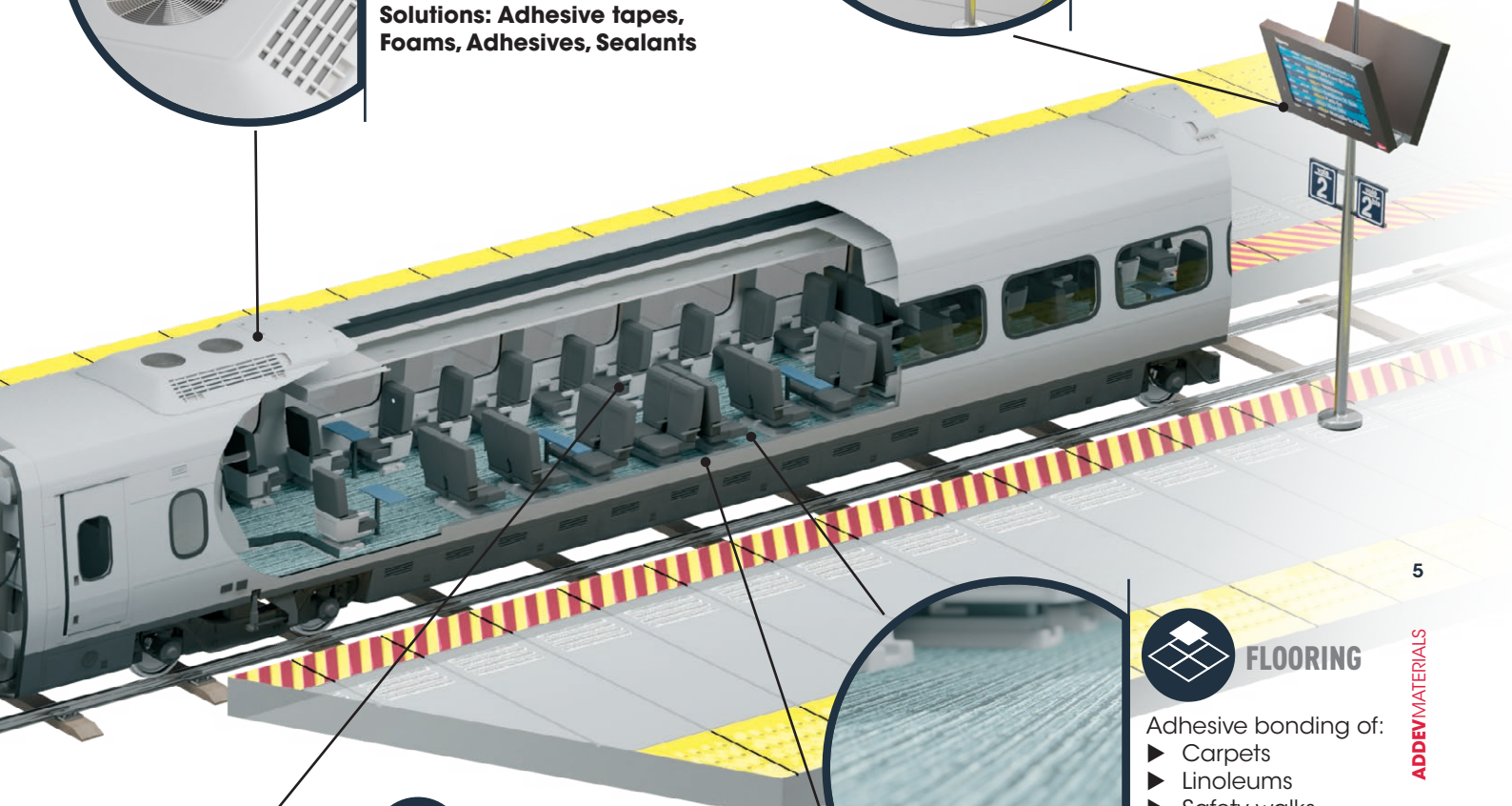
Solutions: Adhesive tapes, Foams, Adhesives, Sealants



MARKING

- ▶ Digital & non digital display signages
- ▶ Safety labels
- ▶ Floor markings

Solutions: Adhesive tapes

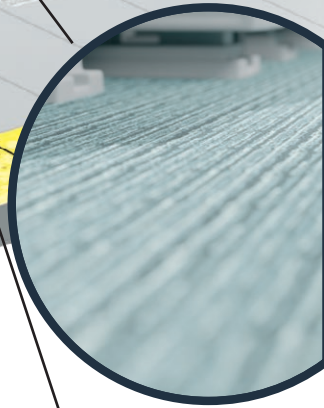


ASSEMBLING

Cabin furnitures bonding & strengthening:

- ▶ Door sealings
- ▶ Seats
- ▶ Tables
- ▶ Mirrors
- ▶ Door handles
- ▶ Lightings
- ▶ Signages

Solutions: Adhesive tapes, Foams, Adhesives



FLOORING

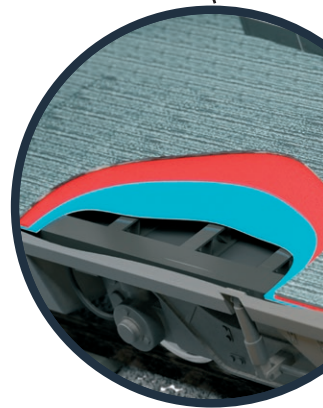
Adhesive bonding of:

- ▶ Carpets
- ▶ Linoleums
- ▶ Safety walks

Solutions: Adhesive tapes, Adhesives

5

ADDEVMATERIALS



VIBRATION, FRICTION & NOISE MANAGEMENT

- ▶ Traction motors
- ▶ HVAC systems
- ▶ Walls, floors, roofs, doors, ceilings, metal panels

Solutions: Adhesive Tapes, Dual lock, VHB®, Foams, Resins

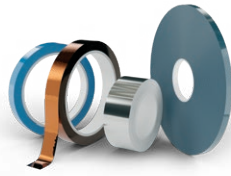
WIDE RANGE OF HIGH PERFORMANCE MATERIALS

As a key partner of world-renowned manufacturers, our product range will meet your requirements as we offer a complete line of flexible, rigid, and liquid materials.

FLEXIBLE MATERIALS



FILMS, LAMINATES & PAPERS



ADHESIVE TAPES



FOAMS

RIGID MATERIALS



COMPOSITES



SLEEVES

LIQUID MATERIALS



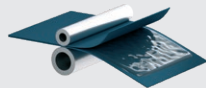
ADHESIVES, SEALANTS & RESINS



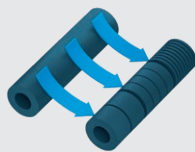
PAINTS & COATINGS

CONVERTING CAPABILITIES

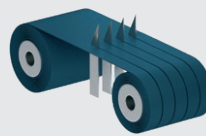
Our large industrial capabilities allow us to convert the above materials according to your needs, in order to provide you with the best solution.



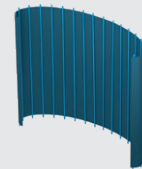
LAMINATING



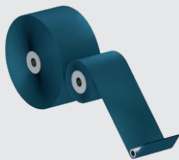
ON-ROLL SLITTING



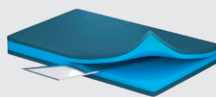
SLITTING



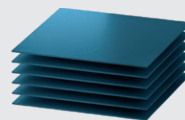
ULTRASONIC WELDING



UNWINDING & REWINDING



SKIVING



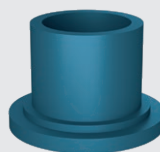
SHEETING



DIE CUTTING



PRINTING



MACHINING

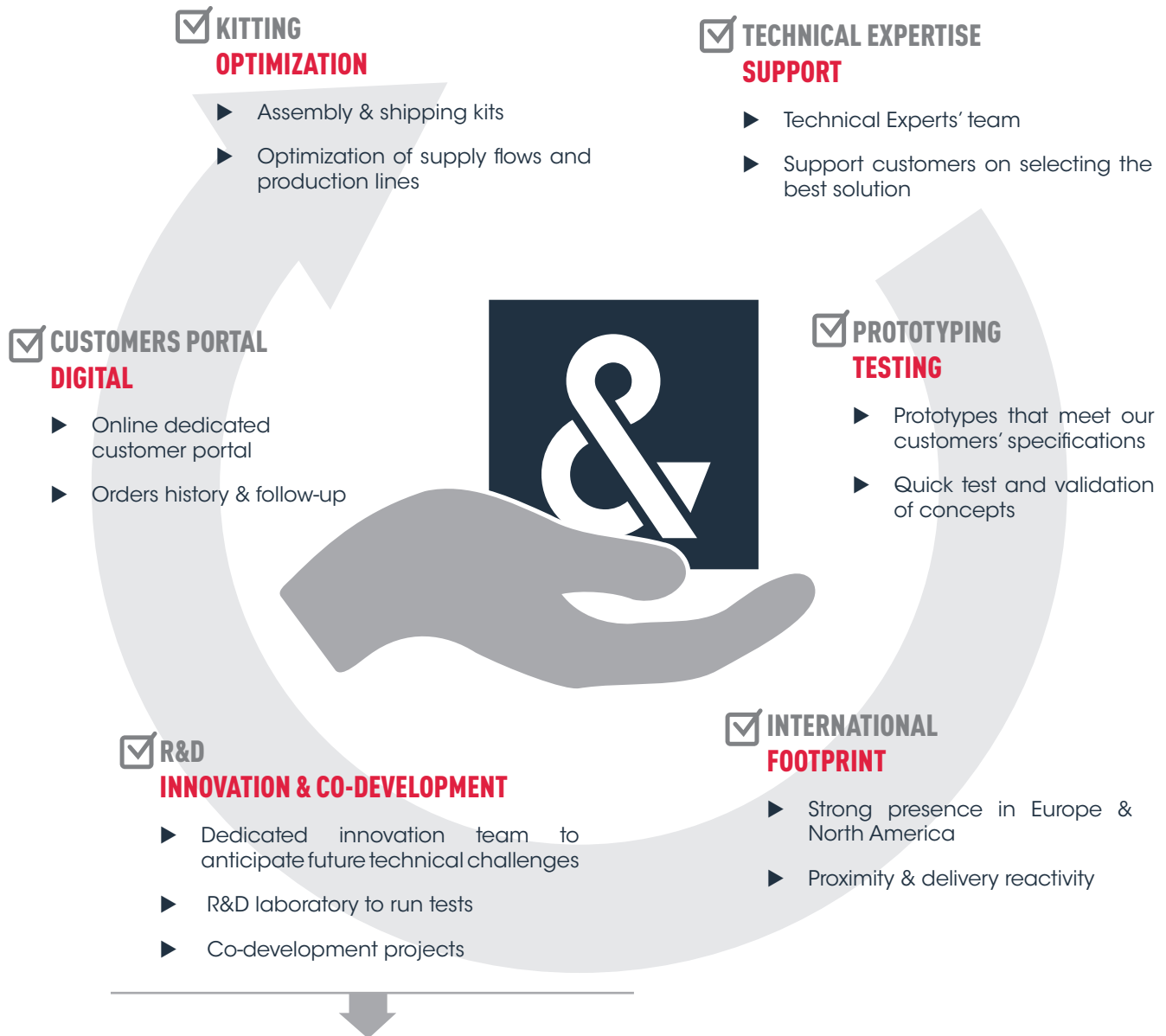


CUSTOM PACKAGING OF CHEMICALS



ADDED VALUE SERVICES

We have developed a range of value-added services to better meet the needs of railway market players across the value chain, from product development to supply chain optimization.



7

ADDEVMATERIALS

R&D AND TECHNICAL PROJECTS SUPPORT

1 - FEASIBILITY

- ▶ Technical feasibility study
- ▶ Budget outlines
- ▶ Timeline

2 - STUDY & DEVELOPMENT

- ▶ Technical specification
- ▶ Prototype design
- ▶ Optimal converting process selection

3 - PRE-INDUSTRIALIZATION

- ▶ Industrial samples
- ▶ Converting process optimization

4 - PRODUCTION

- ▶ Documents validation
- ▶ Production support

PARTNERS NETWORK

3M

tesa

DUPONT

ROGERS
CORPORATION

armacell
MAKING A DIFFERENCE AROUND THE WORLD

Bostik
smart adhesives

Henkel

TENNECO

INTERNATIONAL PRESENCE

Being international while providing local services.

We represent **15 industrial sites** in Europe and North America. We are growing our international footprint to ensure both local and international customer satisfaction by offering an excellent level of service and assistance.



www.addevmaterials.com

ADDEV Materials centers of excellence:

10 industrial sites in Europe & 5 industrial sites in North America specialized in:

- ▶ Technical films, laminates & papers converting
- ▶ Tapes converting
- ▶ Foams converting
- ▶ Non-woven converting
- ▶ Custom packaging of chemical products

 **ADDEV**MATERIALS